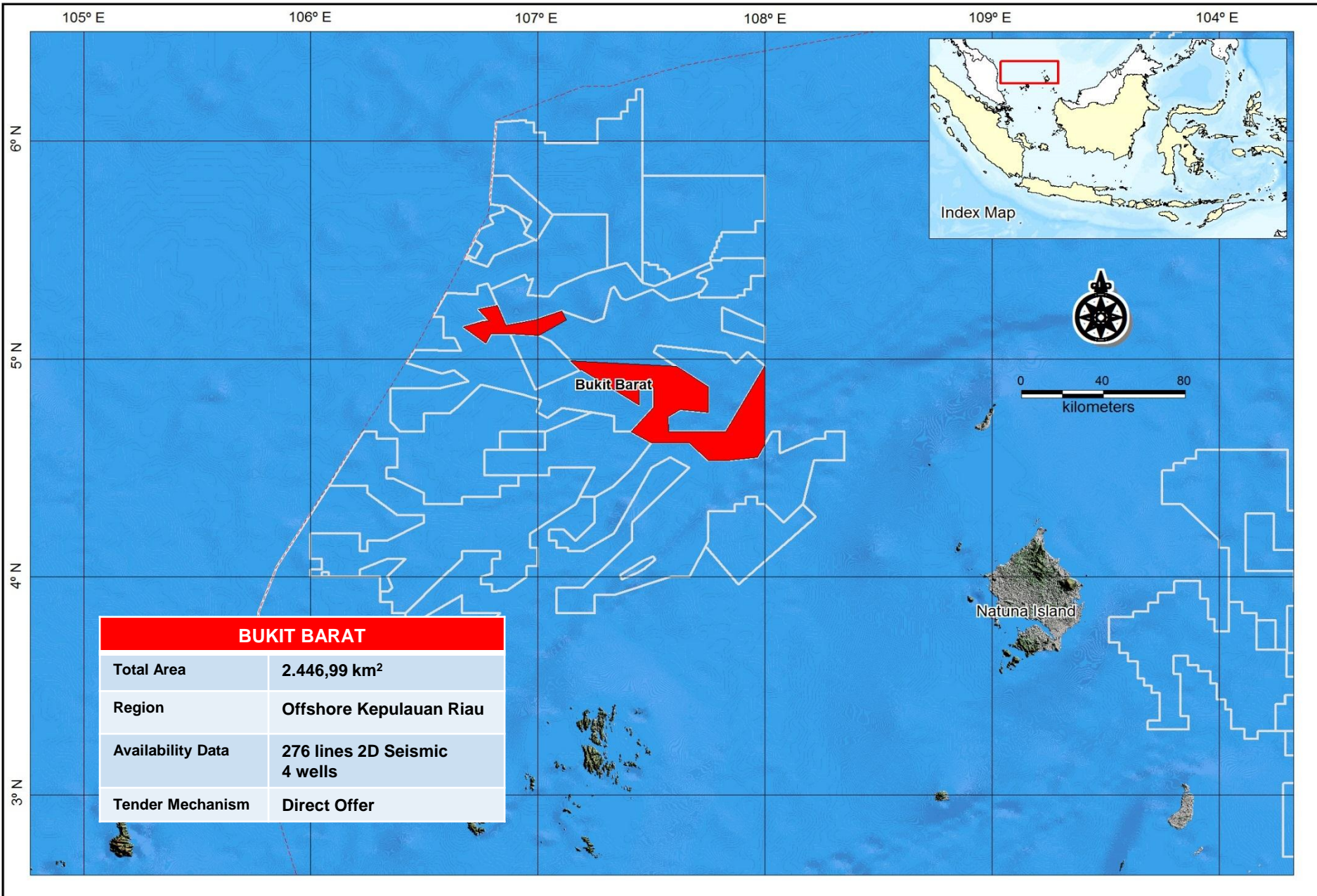


# BUKIT BARAT BLOCK

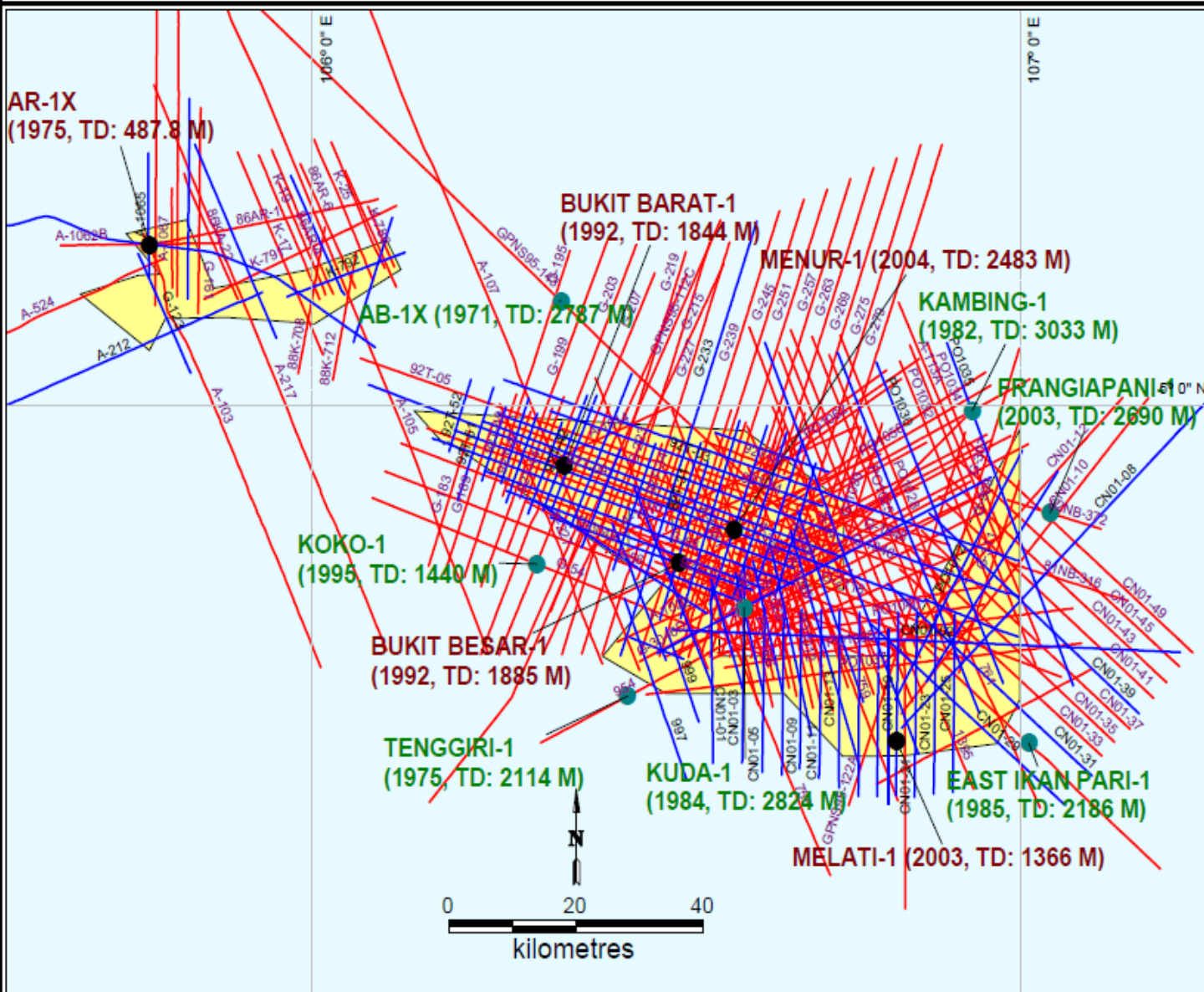


BUKIT BARAT	
Total Area	2.446,99 km <sup>2</sup>
Region	Offshore Kepulauan Riau
Availability Data	276 lines 2D Seismic 4 wells
Tender Mechanism	Direct Offer



# BUKIT BARAT BLOCK

INDONESIA PETROLEUM DIRECT PROPOSAL BIDDING FIRST ROUND  
YEAR 2016



**BUKIT BARAT BLOCK**

**LEGEND :**

- Blue line : Seismic Line (Mandatory Data Seismic Line)
- Red line : Seismic Line (Optional Data Seismic Line)
- Black dot : Well (Mandatory Data Well)
- Green dot : Well (Optional Data Well)
- Yellow box : Block

MANDATORY DATA VOLUME	OPTIONAL DATA VOLUME
Seismic : 2,667.76 Km	Seismic : 7,070.38 Km
Well : 5 Ea	Well : 7 Ea
GGR : 4 Title	
GGM : 3 Title	

Sumatera Kalimantan

PUSAT DATA DAN TEKNOLOGI INFORMASI (PUSDATIN)  
KEMENTERIAN ENERGI DAN SUMBER DAYA MINERAL

## DATA PAKET DAN DATA OPSIONAL PENAWARAN WILAYAH KERJA MIGAS KONVENSIONAL 2016 TAHAP I

NO	BLOCK NAME	DATA PAKET (MANDATORY)									DATA OPSIONAL						
		PND							SURVEI UMUM		PND						
		SEISMIC (km)	CSEM (km)	WELL (ea)	GGR (tit)	GGM (sheet)	PE (ea)	PRICE (USD)	SEISMIC (km)	PRICE (USD)	SEISMIC (PND) (km)	CSEM (km)	WELL (ea)	GGR (tit)	GGM (sheet)	PE (ea)	GEWF* (ea)
<b>A. REGULAR TENDER</b>																	
1	SOUTH CPP	1,314.32	-	7	2	3	1	79,150.53	-	-	2,497.29	-	13	-	-	-	5
2	OTI	2,137.47	71.00	5	4	4	-	73,582.99	-	-	3,916.59	222.00	2	-	-	1	5
3	SUREMANA I	2,250.50	-	3	4	2	-	64,543.20	153.70	15,370.00	4,013.77	-	-	-	-	-	1
4	MANAKARRA MAMUJU	1,497.37	-	2	3	3	-	43,986.17	137.60	13,760.00	1,910.02	-	1	-	-	-	2
5	SE MANDAR	1,884.68	-	1	3	2	-	79,126.40	-	-	950.95	-	-	-	-	-	1
6	NORTH ARGUNI	1,282.65	-	6	4	3	1	79,756.96	-	-	3,841.07	-	10	-	-	-	5
7	KASURI II	1,530.13	-	2	7	-	-	73,650.79	-	-	547.96	-	1	-	-	-	-
<b>B. DIRECT PROPOSAL</b>																	
1	BUKIT BARAT	2,667.76	-	5	4	3	-	79,289.03	-	-	7,070.38	-	7	-	-	-	3
2	BATU GAJAH DUA	1,365.37	-	2	3	3	-	62,384.58	-	-	311.69	-	2	-	-	-	1
3	KASONGAN SAMPIT	231.80	-	2	6	2	-	17,566.57	-	-	443.25	-	1	-	-	-	-
4	AMPUH	2,614.96	-	5	2	2	-	75,815.54	-	-	4,919.16	-	1	-	-	-	1
5	EBUNY	2,566.07	-	1	3	4	-	66,688.34	127.90	12,790.00	12.52	-	-	-	-	-	1
6	ONIN	2,341.41	-	4	5	2	-	70,976.37	-	-	546.23	-	-	-	-	-	2
7	WEST KAIMANA	374.36	-	3	4	2	-	22,457.25	-	-	320.70	-	1	-	-	-	1

GEWF\* : GRAVITAS ELECTRONIC WELL FILE (WELL DATA ENHANCEMENT)

- All price subject to Value Added Tax (VAT) 10 %
- Consortium will get the data package for each consortium member and has to pay the data package price with the formula of  $\{(n \times 100\%) - ((n-1) \times 50\%)\}$  , example :  
 Consortium consists of 2 (two) members, the price will be 150 % of the data package price for 2 (two) set of data packages  
 Consortium consists of 3 (three) members, the price will be 200 % of the data package price for 3 (three) set of data packages  
 Consortium consists of 4 (four) members, the price will be 250 % of the data package price for 4 (four) set of data packages  
 Consortium consists of 5 (five) members, the price will be 300 % of the data package price for 5 (five) set of data packages
- For company, who has already accessed to all some data those included in the data package or who has the right to use data, deducted data package price could be applied by showing the "license agreement to use data" or "confidentiality agreement".
- The payment should be transfer to :  
 PT. PATRA NUSA DATA  
 Bank Mandiri , Graha Elnusa  
 Jl. TB Simatupang Kav 1B, Jakarta - Indonesia 12560  
 Account No : 127-00-0484264-5 (US\$)  
 Swift Code : BMRIDJJA
- Data will be delivered by PT. PATRA NUSA DATA after payment transfer completed
- Data Speculative Survey  
 For Further Information, please contact :  
 PT HAGO IGUR ENERGY  
 Gedung Ario Bimo Central Lt. 4  
 Jl. HR Rasuna Said Blok X-2 No. 5  
 Jakarta - Indonesia 12950  
 Telp: 021-31907214, Fax : 021-3913912, Hp : 0811888559
- Data Optional not included from PT. Hago Igur Energy Seismic Survey